



Aura Minerals Boosts Profits and Reduces Survey Hours with Skycatch



"We use Skycatch to precisely measure how much dirt our contractors are moving. There are enormous gains: if we improve the margin of error in the volume calculations by just one percent, we're talking about saving over \$300,000 dollars a year, per mine."

Fabio Ribeiro, Technology Strategist, Aura Minerals

KEY ROI

\$300,000

Aura Minerals increases profits by correcting billing errors by > 1%

75% Faster

Skycatch Edge1 reduces down time increasing productivity; time to data drops from 20 hrs to 4 hrs

Safer Site

Skycatch eliminates GCP workflows, keeping surveyors out of harms way

DEFINING THE ISSUE

Increase profits, enhance safety

Aura Minerals knows that managing its gold and copper ore inventory can be a time consuming and dangerous process. Their Technology Strategist Fabio Ribeiro began researching ways to analyze their mines faster while keeping their employees safe. They needed to solve for three huge challenges:

- **Time to Data:** Aura Minerals survey each mine once a day and scan their stockpiles three times a day in order to track inventory and the mines output. The surveyors were using laser scanners that were cumbersome to use and output LiDAR data that took at least 8 hours to survey and 14 hours to process the point clouds. That 20-hour delay in data meant important inventory decisions had to wait at least a day, reducing profitability.
- **Dangerous Conditions:** Eight hours walking a jobsite put employees in dangerous situations as they work close to steep cliffs, climbing unstable piles, and navigating between heavy machinery.
- **Accurate Earthwork Management:** Surveying stockpiles is prone to human error, and Aura Minerals estimated that they were overpaying their earthwork contractors, yet had no reliable way to track or verify the data.

During his competitive analysis, Fabio ultimately concluded the Skycatch High Precision Package, consisting of the Explore1 RTK drone and the Edge1 GNSS base station and in-field processing unit, was the correct solution for mitigating safety concerns while also providing quantifiable ROI.



Aura Minerals Inc.

ABOUT AURA MINERALS

Aura Minerals is a South American mining company that specializes in mining for gold and copper ore. Aura Minerals has mines all over South America, from the Ernesto Pau-a-Pique mine in Brazil to Tolda Fria in Columbia. They have strong values based in sustainable growth, environmental responsibility, safety, and social answerability.

FOUNDED

1946

HEADQUARTERS LOCATION

Toronto, Canada

THE CHALLENGE

1. Decrease the turnaround time to data
2. Improve safety
3. Reduce overpayment of earthwork removal

THE SOLUTION + KEY RESULTS

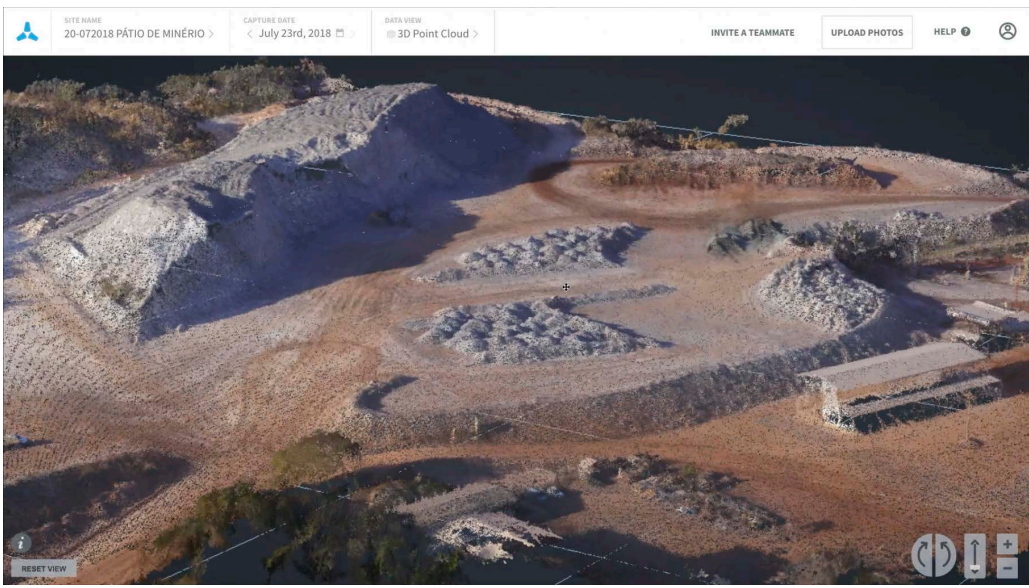
Time to Data Reduced by 75%

The High Precision Package is equipped with Skycatch's first-of-its-kind Edge1 GNSS base station and edge compute module, which reduced time to data to 4 hours from 20, thanks to its rapid processing capabilities.



Generating \$300,000 in Extra Profits

The surveyor-proven RTK technology in the High Precision Package consistently delivers sub 5cm accuracy. This reliable accuracy reduced earthwork contracting errors by 1%, saving each mine an additional \$300,000 per year.



GCP-Free Workflow Improved Safety

Most drone solutions require ground control points to get reliable accuracy, which put surveyors in harms way. The High Precision Package eliminates risk, so the survey team never has to put itself in danger, while still generating highly accurate point clouds in 30 minutes or less.



"We're using Skycatch to survey our whole mine and stockpiles three times a day. What used to take us 20 hours to manually survey now takes us 4 hours to fly and process with the Edge1."

Fabio Ribeiro, Technology Strategist, Aura Minerals

Skycatch generates real ROI for any mining and aggregate operation.
Schedule a call with our mining advisory team today.

sales@skycatch.com

1-855-SKY-4-ROI